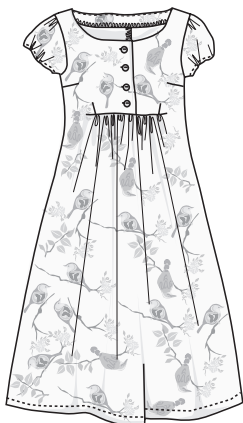


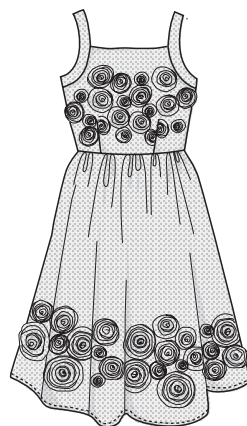
1. 34-52 ●●



2. 34-46 ●●



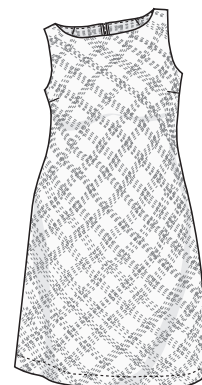
3. 34-46 ●●



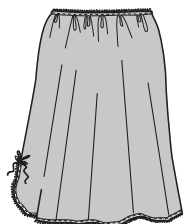
4. 34-46 ●●



6. 34-52 ●●



6. 34-52 ●●



5. 34-52 ●



8. 34-52 ●●



14. 34-52 ●



10. 34-52 ●



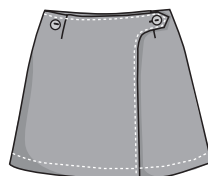
16. 34-52 ●



7. 34-52 ●



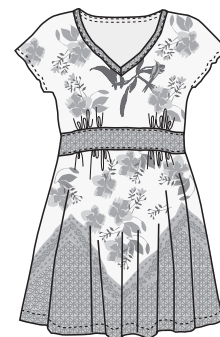
9. 34-52 ●



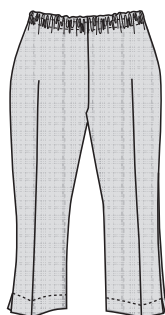
11. 34-52 ●●



12. 34-52 ●



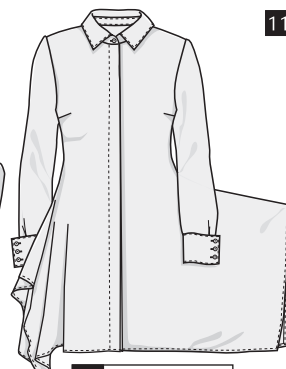
19. 34-52 ●●



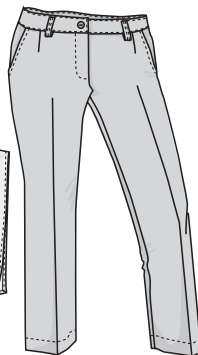
15. 34-52 ●



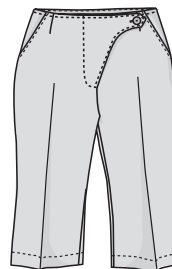
20. 34-52 ●●



17. 34-52 ●●●



18. 34-48 ●●



13. 34-52 ●●

NEVER WITHOUT A DRESS

Dresses with a touch of the good old days and a pinch of bohemian. A sweet vintage-style chemise, light summer dresses and a romantic special-occasion dress. An elegant, feminine sleeveless dress and a beautifully-textured viscose-jersey jacket for special occasions for the grown-up woman.

Sizes 34-46 and 34-52

BON VOYAGE

Clothes for sporty, active women. An easy-to-make coat, two pairs of pants, a top and a tunic. An ultra-light tunic blouse with a floaty hemline, a sleeveless dress and a light viscose-jersey cardigan. Bermuda shorts, a wrap-around skirt and snazzy tops. A wide range of sizes!

Sizes 34-48 and 34-52